



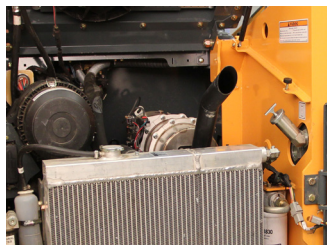
QUICK SPECS

Rated Operating Capacity	1900 lbs (862 kg)
Net Power	68.4 hp (51.0 kW) @ 2500 rpm
Operating Weight - approx.	6880 lbs (3121 kg)
Lift Height	120.5 in (3061 mm)

Everything you want in a skid steer. Including Tier 4 Final.

When you own an S190R-1 Skid Steer Loader, you don't get 10 different machines. But it sure seems that way. With the perfect balance of power from our new 68.4-hp Tier 4 Final diesel engine and versatile performance, you're ready to face whatever challenge the day throws at you. From lifting more than two tons into a truck or trailer to hitching up a wide variety of attachments, this workhorse will help you knock out a list of jobs as long as your arm.

INNOVATIVE FEATURES



NEW TIER 4 FINAL ENGINE

Our new 68.4-hp Tier 4 Final diesel engine burns cleaner, without sacrificing power or fuel efficiency. It features an ECU-controlled common rail fuel injection system, water-cooled exhaust gas recirculation (EGR), a new intake throttle valve and DPF with active regeneration. The DPF regeneration control results in very low lube oil dilution and lower fuel consumption overall, plus extended DPF durability and longer maintenance intervals.



SPACIOUS, COMFORTABLE CAB

Our newly upgraded operator's station is larger and more comfortable, a real plus when you've got to spend a long day on the job. And the towers have been lowered for better visibility and enhanced safety.

STANDARD CONTROL SYSTEMS ACROSS ALL MODELS

Each of our skid steer loaders now feature the exact same ergonomically enhanced control system, so operation is simple, comfortable and consistent regardless of model.

S190R-1

SKID STEER LOADER

POWERFUL 68.4-HP TIER 4 FINAL NATURALLY ASPIRATED DIESEL ENGINE

COMFORTABLE HIGH-VISIBILITY CAB

LEVEL II ROPS/FOPS OVERHEAD GUARD STANDARD

MANUAL QUICK COUPLER STANDARD

POWER QUICK COUPLER OPTIONAL

SELF-LEVELING SYSTEM OPTIONAL

ELECTRONIC INFORMATION CENTER DISPLAY STANDARD

RIDE CONTROL SYSTEM

ANTI-VANDALISM REAR GRILLE PACKAGE

HIGH FLOW HYDRAULICS OPTIONAL



S190R-1

SKID STEER LOADER

Specifications

ENGINE	Make	Yanmar
	Model	4TNV98C-NMS Tier 4 Final
	Net Power	68.4 hp (51.0 kW)
	Rated Engine Speed	2500 rpm
	Displacement	202.6 cu.in. (3,319 L)
CAPACITIES/ WEIGHT	Rated Operating Capacity	1900 lbs (862 kg)
	With Optional Counterweight	2110 lbs (957 kg)
	Tipping Load	3800 lbs (1724 kg)
	Fuel Tank	16.5 gal (62.5 L)
	Travel Speed - Maximum	12.5 mph (20.0 kph)
	Operating Weight - Approximate	6880 lbs (3121 kg)
DIMENSIONS	Overall Operating Height - Fully Raised	158" (4013 mm)
	Height to Hinge Pin - Fully Raised	120.5" (3061 mm)
	Overall Height to top of ROPS	80" (2032 mm)
	Ground Clearance to Chassis	6.5" (165 mm)
	Overall Length w/ Bucket	127" (3226 mm)
	Overall Length w/o Bucket	94" (2388 mm)
	Wheelbase	42" (1067 mm)
	Dump Reach at Full Height	22.5" (572 mm)
	Rollback at Ground Level	26°
	Dump Angle	42°
	Overall Width	64.5" (1638 mm)
	Bucket Width	66" (1676 mm)
	Clearance Radius - Rear	58.5" (1486 mm)
	Clearance Radius - Front w/o Bucket	44.5" (1130 mm)
	Clearance Radius - Front w/ Bucket	79" (2007 mm)
	Seat to Ground Height	39" (991 mm)
	Rollback at Full Height	96°
	Dump Height	91" (2311 mm)
	Departure Angle	25°
	Standard Tire Size	10.00 x 16.5 HD
HYDRAULICS	Auxiliary Hydraulics - Standard	18.5 gpm (70.03 L/min)
	High-Flow Hydraulics - Optional	31.5 gpm (119.24 L/min)
	System Relief Pressure (bar)	3000 psi (207)
	Reservoir Capacity	11.0 gal (41.6 L)
ELECTRICAL	Battery	12-volt (950 CCA)
	Starter	12-volt (3.0 kW)
	Alternator	95-amp

Please note that the standard equipment may vary from this list. Consult your Yanmar dealer for confirmation.