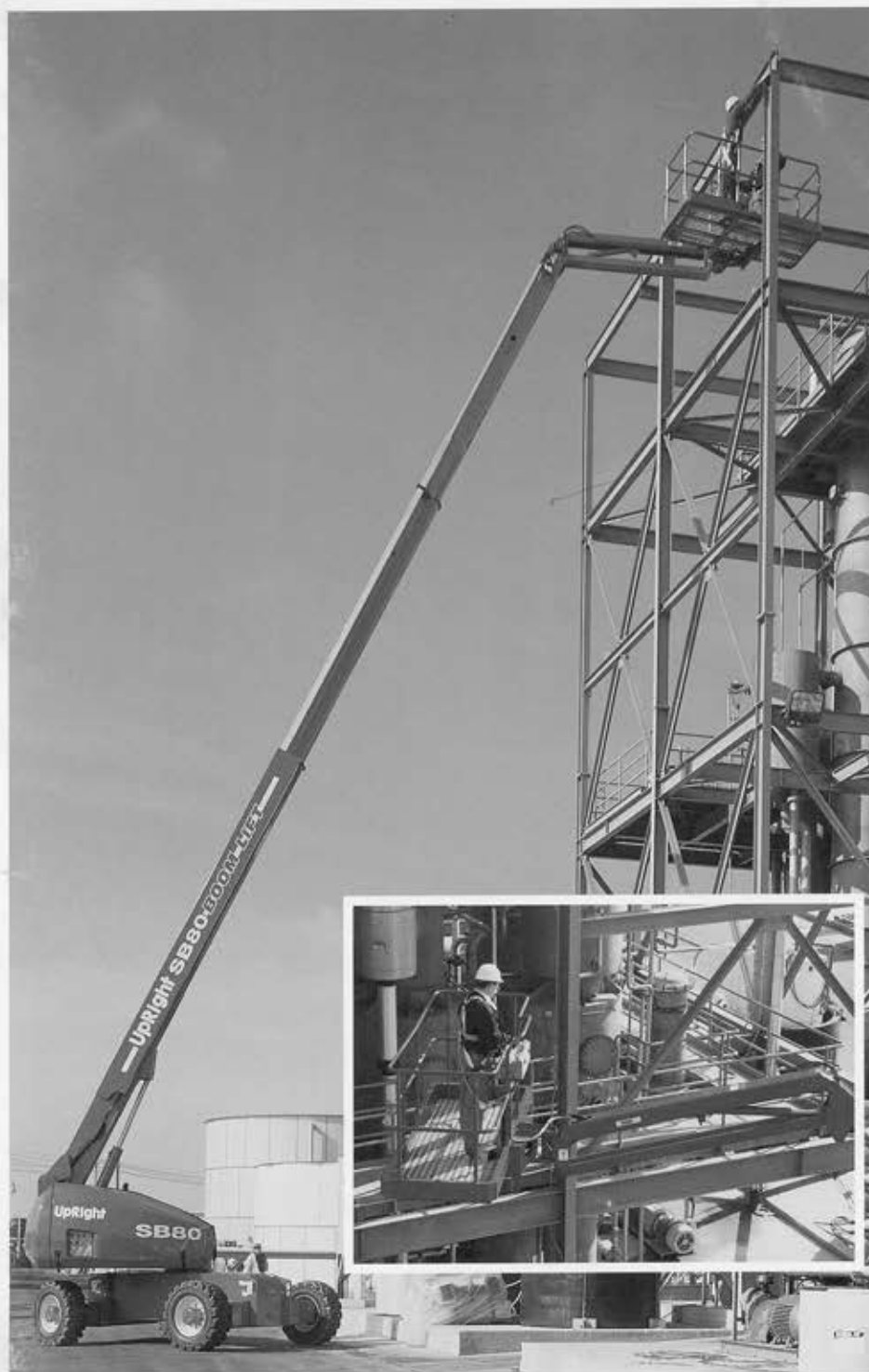


UpRight SB80

Telescopic Boom Lifts



- ◆ Three section 80 ft. telescopic boom.
- ◆ Closer to work using 8 ft. jib
- ◆ 72 ft. horizontal outreach
- ◆ 4WD, oscillating front axle
- ◆ Power out axles extend in 10 seconds
- ◆ Excellent maneuverability in rough terrain
- ◆ 40% gradeability
- ◆ Smooth, user friendly proportional controls: lifting, telescoping, rotating
- ◆ Responsive - 90 seconds to 80 ft.
- ◆ 600 lbs. capacity with choice of 6 ft. or 8 ft. platforms
- ◆ 180° hydraulic platform rotation
- ◆ 360° continuous rotation
- ◆ Powerful Perkins diesel or GM gasoline engine
- ◆ 5 year structural warranty

UpRight

Power Out Extendable Axles*

Patents are pending on the unique UpRight Power Out extendable axle system. The whole operation usually takes less than one revolution of the tires at creep speed. Axle retraction works the same way providing operators the versatility to operate the SB80 as a 40 ft. boom in narrower areas.



The Boom operator deploys axles from the platform in less than 10 seconds by driving forward or backward. No need to get down in the mud to set jacks.



Axle in



Axle out

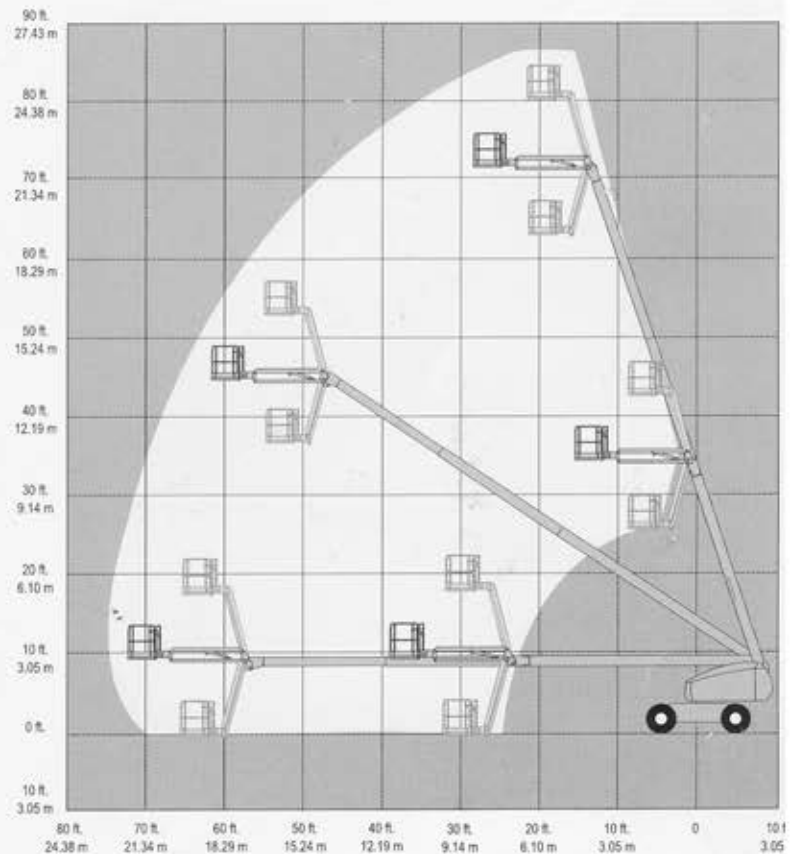
Add Option for Sloped Surfaces

With the factory-installed option, the SB80 can operate on sloped surfaces up to 3 degrees. The package includes 18 x 22.5 poly-filled tires, slope alarm and other adjustments.



Transportability

With 40% gradeability and 4WD, delivery drivers will really appreciate the convenience of transporting the SB80. With a low gross vehicle weight, the SB80 is cost effective to transport. Extendable axles on the SB80 can be operated from the platform to adjust machine width from 10 ft. 6" to 8 ft. for truck delivery. There is no need to obtain special permits for oversized or overweight loads.



SB80 Range of Motion

UpRight

UpRight SB80

SPECIFICATIONS	SB80 4WD Diesel		SB80 4WD Gasoline/Dual Fuel	
	U.S.	Metric	U.S.	Metric
WORKING HEIGHT	86 ft.**	26.4 m**	86 ft.**	26.4 m**
PLATFORM HEIGHT	80 ft.	24.4 m	80 ft.	24.4 m
HORIZONTAL OUTREACH	72 ft.	22 m	72 ft.	22m
JIB LENGTH	8 ft.	2.4 m	8 ft.	2.4 m
JIB ARC	140°	140°	140°	140°
STD. PLATFORM SIZE - outside	39 in. x 72 in.	1 m x 1.83 m	39 in. x 72 in.	1 m x 1.83 m
OPT. 8 FT. (2.4 M) PLATFORM	39 in. x 96 in.	1 m x 2.44 m	39 in. x 96 in.	1 m x 2.44 m
CAPACITY - 6 ft. or 8 ft. platform	600 lbs.	272 kg	600 lbs.	272 kg
MAX. NO. OF OCCUPANTS	2	2	2	2
PLATFORM ROTATION	180° hydraulic	180° hydraulic	180° hydraulic	180° hydraulic
TURRET ROTATION	continuous	continuous	continuous	continuous
STOWED HEIGHT	8 ft. 11 in.	2.72 m	8 ft. 11 in.	2.72 m
STOWED LENGTH	37 ft. 8 in.	11.5 m	37 ft. 8 in.	11.5 m
STOWED WIDTH	8 ft.	2.44 m	8 ft.	2.44 m
INSIDE TURNING RADIUS	9 ft. 10 in.	3 m	9 ft. 10 in.	3 m
OUTSIDE TURNING RADIUS	22 ft. 2 in.	6.7 m	22 ft. 2 in.	6.7 m
TAILSWING - stowed	3 ft. 3 in.	1 m	3 ft. 3 in.	1 m
DRIVE SPEED - boom stowed, travel	3.25 mph	5.2 km/h	3.25 mph	5.2 km/h
DRIVE SPEED - boom elevated	.7 mph	1.2 km/h	.7 mph	1.2 km/h
GRADEABILITY - 4WD	40%	40%	35%	35%
ENGINE	Perkins 1004-42 86 HP	Perkins 1004-42 64 Kw	GM 3.0L 69 HP	GM 3.0L 51 Kw
AIR-FILLED TIRES	15 x 22.5 16 ply	15 x 22.5 16 ply	15 x 22.5 16 ply	15 x 22.5 16 ply
WHEEL BASE	9 ft. 6 in.	2.9 m	9 ft. 6 in.	2.9 m
GROUND CLEARANCE	12 in.	.3 m	12 in.	.3 m
TOEBOARDS	6 in.	.15 m	6 in.	.15 m
GUARDRAIL HEIGHT	45 in.	1.14 m	45 in.	1.14 m
GROSS WEIGHT	32,500 lbs.	14,750 kg	32,500 lbs.	14,750 kg
STANDARD/OPTIONAL FEATURES				
Cycle Time to Full Height	90 seconds	90 seconds	90 seconds	90 seconds
Proportional Controls lift, swing, telescope	standard	standard	standard	standard
Dual Fuel/Propane for Gas Model	n/a	n/a	optional	optional
AC Power to the Platform	standard	standard	standard	standard
Hour Meter	standard	standard	standard	standard
Motion Alarm, Flashing Amber Beacon	optional	optional	optional	optional
Poly-filled Tires	optional***	optional***	optional	optional
Horn	standard	standard	standard	standard

*Meets or exceeds applicable requirements of OSHA, ANSI A92.5 and CE. Specifications subject to change without notice.

**Working height in the U.S. is 6 ft. above platform height; metric working height is 2 meters above platform height.

***Standard on CE models.

Photos and diagrams in this brochure are for promotional purposes only. Refer to appropriate UpRight Operator's manual for detailed instructions on the proper use and maintenance of this equipment. UpRight also manufactures a complete line of aluminum scaffolding, portable and trailer mounted lifts, plus other booms and scissors. Contact your UpRight distributor for information on other products.

UpRight

USA (800) 926-5438, (559) 891-5200 FAX (559) 896-9012

1775 Park Street, Selma CA 93662

Europe (353) 1-202-4100 FAX (353) 1-202-4102

Pottery Road, Dun Laoire, Ireland

www.upright.com e-mail: marketing@upright.com

Printed in U.S.A. Copyright UpRight, Inc. 1999.

Form No. 6096-990310-A