

600 Series

TELESCOPIC BOOM LIFTS



Articulating Jib Provides Reach Versatility



Oscillating Axle For Improved Traction & Drive Performance



Greater Terrainability with Optional 600S Crawler Series

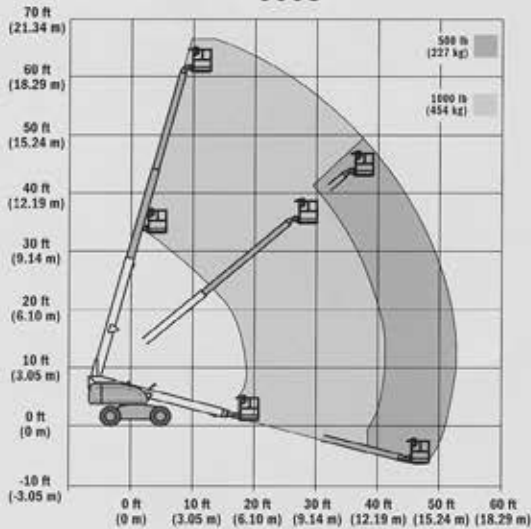
600S
600SJ
660SJ

www.jlg.com

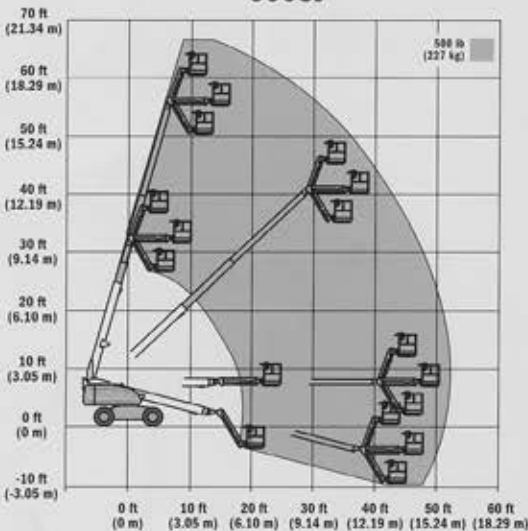


JLG

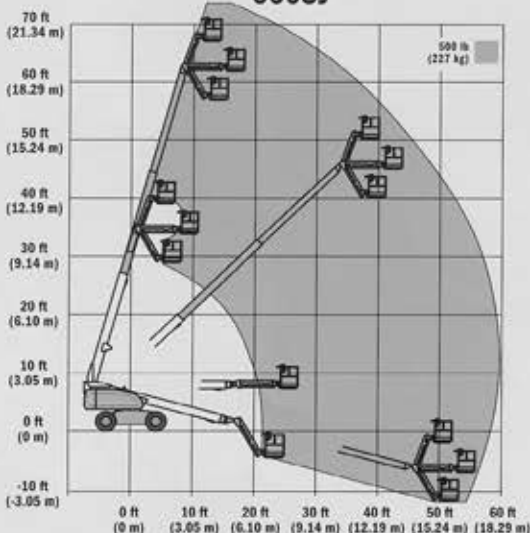
600S



600SJ



660SJ



Model 600S

Reach Specifications

Platform Height	60 ft 3 in. (18.36 m)
Horizontal Outreach	49 ft 6 in. (15.09 m)
Swing	360° Continuous
Platform Capacity—Restricted	1,000 lb (454 kg)
Platform Capacity—Unrestricted	500 lb (227 kg)
Platform Rotator	160° Hydraulic

Dimensional Data

A. Platform Size	36 x 96 in. (0.91 x 2.44 m)
B. Overall Width	7 ft 11 in. (2.41 m)
C. Tailswing (working condition)	3 ft 9 in. (1.14 m)
D. Stowed Height	8 ft 5 in. (2.57 m)
E. Stowed Length	27 ft 11 in. (8.51 m)
F. Wheelbase	8 ft 1 in. (2.46 m)
G. Ground Clearance	12 in. (30 cm)
Gross Vehicle Weight ¹	25,100 lb (11,385 kg)
Max. Ground Bearing Pressure	67 psi (4.7 kg/cm ²)

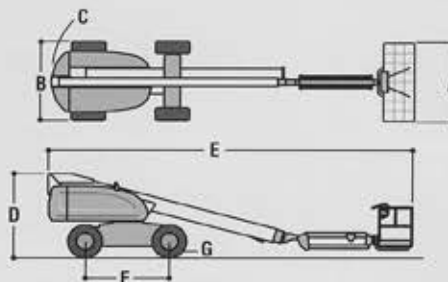
Chassis

Drive Speed 2WD	4.25 mph (6.8 kmph)
Drive Speed 4WD	4.25 mph (6.8 kmph)
Gradeability 2WD	30%
Gradeability 4WD	45%
Tires	15 x 19.5 Lug Tread
Axle Oscillation	8 in. (20 cm)
Turning Radius, (Inside/Outside)	
600S 2WS	11 ft 4 in./17 ft 9 in. (3.45 m/5.41 m)
600S 4WS	5 ft 5 in./11 ft 4 in. (1.65 m/3.45 m)

Power Source

Dual Fuel Engine, Ford LRG-425	82 hp (61 kW)
Diesel Engine, Deutz F4M1011F	65 hp (48 kW)
Diesel Engine, Caterpillar 3044C	63.3 hp (47.2 kW)
Fuel Tank Capacity	40 gal (151 L)
Hydraulic Reservoir	32 gal (121 L)
Auxiliary Power	12V DC

1. Certain options or country standards increase weight.



Standard Features

- Platform: 36 in. x 96 in. (0.91 m x 2.44 m)
- SkyPower™ Package
- Oscillating Axle
- Inward Swinging Gate
- Hydraulic Platform Rotator
- AC Receptacle in the Platform
- 5 Degree Tilt Alarm/Indicator Light
- Swing-Out Engine Tray
- 12V DC Auxiliary Power
- Hourmeter
- Control ADE™ System
- All Motion Alarm Lifting Legs