

TB80

STRAIGHT TELESCOPING BOOM

PLATFORM

Height80' (24.4 m)
A. Size30"x 92" (76 x 234 cm)
 Capacity500 lbs (227 kg)
 ConstructionSteel

MACHINE DIMENSIONS

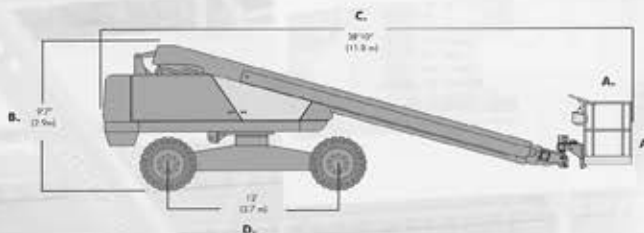
B. Stowed Height.....97" (2.9 m)
C. Stowed Length.....38'10" (11.8 m)
D. Wheelbase12' (3.7 m)
 Width (stowed).....8'6" (2.6 m)
 Weight.....30,300 lbs (13,744 kg)
 Tire Size.....15 x 22.5 (Foam Filled)

PERFORMANCE

Horizontal Reach.....71'1-1/2" (21.7 m)
Cummins Power SourceGas or Diesel
 Fuel Capacity40 gal (151.4 l)
 Hydraulic tank cap65 gal (246 l)
 Drive speed
 ElevatedCreep
 Stowed3 mph (4.8 kph)
 Gradeability25%

STANDARD FEATURES

- 360 degree continuous turntable rotation
- Proportional controls
- 165 degree hydraulic platform rotation
- 12 volt emergency power
- Manual bleed down valve
- Engine anti-restart
- Oil level/temp gauges
- Driveable at full height
- 5 degree tilt alarm
- 125 volt GFCI AC outlet
- Aluminum upper booms
- Hour meter
- High engine temp/low oil pressure shut down
- Tie down lug
- Foam filled tires
- Extendable rear axles
- Operator horn
- Hydraulic oil level and temperature gauges
- Lifting lug

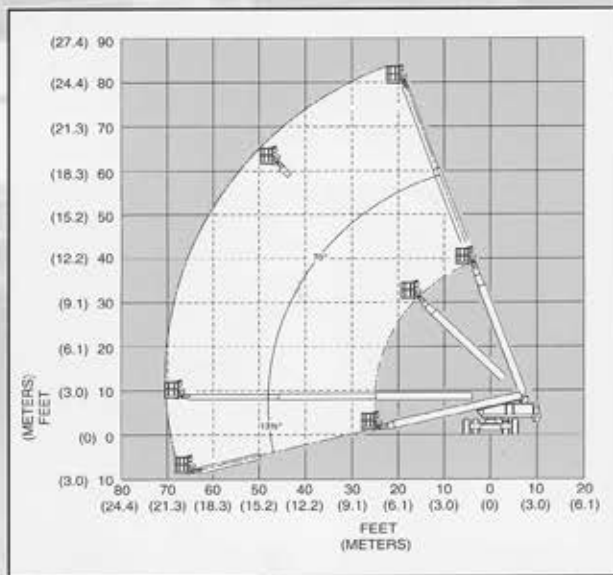


OPTIONS

- Platform control box cover
- Platform work lights
- Flashing light on boom
- Swinging gate
- Sandblast protection kit
- Driving lights
- Dual Fuel
- Spark arrestor muffler
- Cold weather start kit
- AC Generator
- Drive motion alarm
- Tow kit
- Four wheel drive
- Airline to platform
- Platform - 92" x 30" (234 x 76 cm) capacity 600 lbs., 273 kg
- Aluminum

DANGER: Models described in this brochure are NON-INSULATED and do not provide electrocution protection from contact with or close proximity to energized conductors which is pointed out on decals and placards attached to the machine. Only qualified and trained operators are to be authorized to use and operate a work platform. Aerial work platforms must be elevated only on firm, level surface. Products in this brochure comply with applicable ANSI Standards.

This literature is for illustrative purposes only. Consult Operating Maintenance and Parts Manuals for proper procedures. Specifications may vary and are subject to change without notice or obligation.



Snorkel

An ISO 9001 Registered Company
 Printed in U.S.A. TB80 10-02

Manufacturing Plant

2009 Roseport Road
 Elwood, KS 66024
 800-255-0317 Toll Free
 785-989-3000 Office
 785-989-3070 Fax

Australia

26 Redfern Road
 Wetheril Park NSW
 2164 Australia
 (02) 9725 4000 tel
 (02) 9609 3057 fax