

# KOMATSU®

## PC400LC-7

**FLYWHEEL HORSEPOWER**  
246 kW **330 HP** @ 1850 rpm

**OPERATING WEIGHT**  
42588–46719 kg  
**93,890–103,000 lb**

**PC  
400  
LC**

**HYDRAULIC EXCAVATOR**



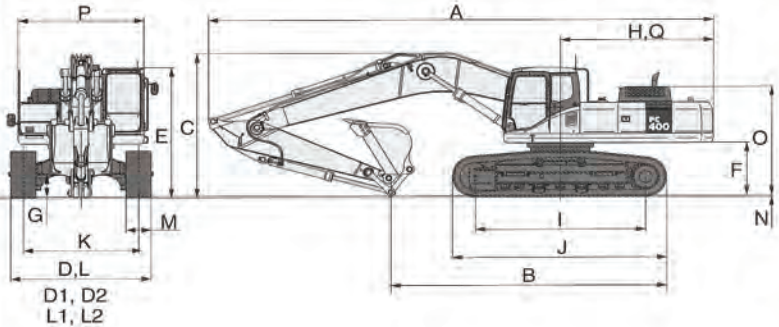
Photo may include optional equipment.

**GALEO**



**TRANSPORTATION DIMENSIONS**

	Arm	2400 mm	7'10"	2900 mm	9'6"	3380 mm	11'1"	4000 mm	13'1"	4800 mm	15'9"
A	Overall length	11905 mm	39'1"	11995 mm	39'4"	11940 mm	39'2"	11950 mm	38'10"	11830 mm	38'10"
B	Length on ground (transport)	8375 mm	27'6"	7475 mm	24'6"	6705 mm	22'0"	6330 mm	20'9"	6035 mm	20'
C	Overall height (to top of boom)	3850 mm	12'8"	3745 mm	12'3"	3635 mm	11'11"	3885 mm	12'9"	4435 mm	14'7"
D	Overall width	3540 mm	11'7"								
E	Overall height (to top of cab)	3265 mm	10'9"								
F	Ground clearance, counterweight	1320 mm	4'4"								
G	Ground clearance, (minimum)	550 mm	1'10"								
H	Tail swing radius	3645 mm	12'0"								
I	Track length on ground	4350 mm	14'3"								
J	Track length	5355 mm	17'7"								
K	Track gauge	2740 mm	9'0"								
L	Width of crawler	3540 mm	11'7"								
M	Shoe width	800 mm	31.5"								
N	Grouser height	37 mm	1.5"								
O	Machine cab height	2715 mm	8'11"								
P	Machine cab width	2995 mm	9'10"								
Q	Distance, swing center to rear end	3605 mm	11'10"								

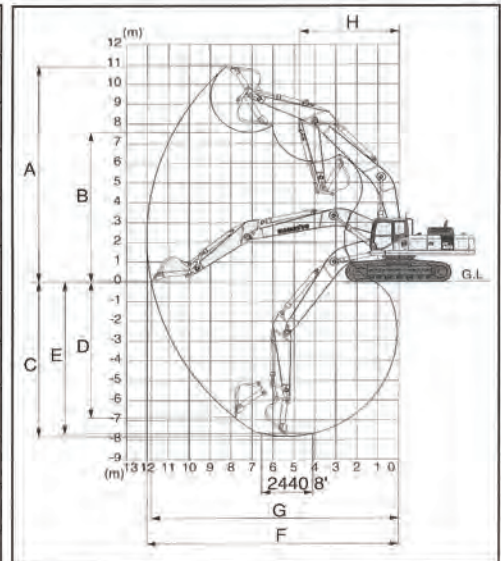


Variable Gauge Transportation Dimension Differences		
D1	Overall width (crawler retracted)	3190 mm 10'6"
D2	Overall width (crawler extended)	3690 mm 12'1"
G	Ground clearance (minimum)	685 mm 2'3"
K	Track gauge (crawler extended)	2890 mm 9'6"
L1	Width of crawler (retracted)	3190 mm 10'6"
L2	Width of crawler (extended)	3690 mm 12'1"
M	Track shoe width	800 mm 31.5"



**WORKING RANGE**

Arm	2400 mm	2900 mm	3380 mm	4000 mm	4800 mm	
	7'10"	9'6"	11'1"	13'1"	15'9"	
A	Max. digging height	10310 mm 33'10"	10285 mm 33'9"	10915 mm 35'10"	11025 mm 36'2"	11485 mm 37'8"
B	Max. dumping height	7070 mm 23'2"	7080 mm 23'3"	7565 mm 24'10"	7715 mm 25'4"	8145 mm 26'9"
C	Max. digging depth	6845 mm 22'6"	7345 mm 24'1"	7820 mm 25'8"	8445 mm 27'8"	9255 mm 30'4"
D	Max. vertical wall digging depth	5305 mm 17'5"	5700 mm 18'8"	6870 mm 22'6"	7285 mm 23'11"	8150 mm 26'9"
E	Max. digging depth of cut for 8' level	6650 mm 21'10"	7155 mm 23'6"	7680 mm 25'2"	8315 mm 27'3"	9145 mm 30'0"
F	Max. digging reach	11080 mm 36'4"	11445 mm 37'7"	12025 mm 39'5"	12565 mm 41'3"	13365 mm 43'10"
G	Max. digging reach at ground level	10855 mm 35'7"	11230 mm 36'10"	11820 mm 38'9"	12365 mm 40'7"	13180 mm 43'3"
H	Min. swing radius	4835 mm 15'10"	4810 mm 15'9"	4735 mm 15'6"	4800 mm 15'9"	4885 mm 16'0"
SAE rating	Bucket digging force at power max.	24600 kg 54,230 lb	24500 kg 54,010 lb	24400 kg 53,790 lb	24400 kg 53,790 lb	24400 kg 53,790 lb
	Arm crowd force at power max.	24600 kg 54,230 lb	25000 kg 55,120 lb	20900 kg 46,080 lb	18800 kg 41,450 lb	16500 kg 36,400 lb
ISO rating	Bucket digging force at power max.	28200 kg 62,170 lb	28100 kg 61,950 lb	28000 kg 61,730 lb	27500 kg 60,630 lb	27500 kg 60,630 lb
	Arm crowd force at power max.	25900 kg 57,100 lb	26200 kg 57,760 lb	21800 kg 48,060 lb	19400 kg 42,770 lb	17000 kg 37,500 lb



# PC400LC-7 HYDRAULIC EXCAVATOR

## SPECIFICATIONS



### ENGINE

Model . . . . . Komatsu SAA6D125E-3  
 Type . . . . . Water-cooled, 4-cycle, direct injection  
 Aspiration . . . . . Turbocharged, air-to-air, aftercooled  
 Number of cylinders . . . . . 6  
 Bore . . . . . 125 mm **4.92"**  
 Stroke . . . . . 150 mm **5.91"**  
 Piston displacement . . . . . 11.04 ltr **674 in<sup>3</sup>**  
 Flywheel horsepower:  
 ISO 9249 / SAE J1349 . . . . . Gross 259 kW **347 HP**  
 Net 246 kW **330 HP**  
 Rated rpm . . . . . 1850 rpm  
 Governor . . . . . All-speed control, electronic  
 EPA, EU, and Japan Tier 2 emission certified.



### HYDRAULICS

Type . . . . . HydraulMind (Hydraulic Mechanical Intelligence New Design) system, closed-center system with load sensing valves and pressure compensated valves  
 Number of selectable working modes . . . . . 4  
 Main pump:  
 Type . . . . . Variable displacement piston type  
 Pumps for . . . . . Boom, arm, bucket, swing, and travel circuits  
 Maximum flow . . . . . 690 ltr/min **182 U.S. gal/min**  
 Supply for control circuit . . . . . Self-reducing valve  
 Hydraulic motors:  
 Travel . . . . . 2 x axial piston motor with parking brake  
 Swing . . . . . 1 x axial piston motor with swing holding brake  
 Relief valve setting:  
 Implement circuits . . . . . 37.3 MPa 380 kgf/cm<sup>2</sup> **5,400 psi**  
 Travel circuit . . . . . 37.3 MPa 380 kgf/cm<sup>2</sup> **5,400 psi**  
 Swing circuit . . . . . 27.9 MPa 285 kgf/cm<sup>2</sup> **4,050 psi**  
 Pilot circuit . . . . . 3.2 MPa 33 kgf/cm<sup>2</sup> **470 psi**  
 Hydraulic cylinders:  
 (Number of cylinders – bore x stroke x rod diameter)  
 Boom . . . . . 2–160 mm x 1570 mm x 110 mm **6.3" x 61.8" x 4.3"**  
 Arm . . . . . except 2.4 m **7"10"**  
     1–185 mm x 1820 mm x 120 mm **7.3" x 71.7" x 4.7"**  
     for 2.4 m **7"10"**  
     1–185 mm x 1590 mm x 120 mm **7.3" x 62.6" x 4.7"**  
 Bucket . . . . . 1–160 mm x 1270 mm x 110 mm **6.3" x 50" x 4.3"**



### DRIVES AND BRAKES

Steering control . . . . . Two levers with pedals  
 Drive method . . . . . Hydrostatic  
 Maximum drawbar pull . . . . . 329 kN 33510 kgf **73,880 lb**  
 Gradeability . . . . . 70%, 35°  
 Maximum travel speed: High . . . . . 5.5 km/h **3.4 mph**  
 (Auto-Shift) Low . . . . . 3.0 km/h **1.9 mph**  
 Service brake . . . . . Hydraulic lock  
 Parking brake . . . . . Mechanical disc brake



### SWING SYSTEM

Drive method . . . . . Hydrostatic  
 Swing reduction . . . . . Planetary gear  
 Swing circle lubrication . . . . . Grease-bathed  
 Service brake . . . . . Hydraulic lock  
 Holding brake/Swing lock . . . . . Mechanical disc brake  
 Swing speed . . . . . 9.0 rpm  
 Swing torque . . . . . 15359 kg·m **111,059 ft lbs**



### UNDERCARRIAGE

Center frame . . . . . X-frame  
 Track frame . . . . . Box-section  
 Seal of track . . . . . Sealed track  
 Track adjuster . . . . . Hydraulic  
 Number of shoes (each side) . . . . . 49  
 Number of carrier rollers . . . . . 2 each side  
 Number of track rollers (each side) . . . . . 8



### COOLANT AND LUBRICANT CAPACITY (REFILLING)

Fuel tank . . . . . 650 ltr **172 U.S. gal**  
 Coolant . . . . . 34.2 ltr **9.0 U.S. gal**  
 Engine . . . . . 38.0 ltr **10.0 U.S. gal**  
 Final drive, each side . . . . . 12.0 ltr **3.2 U.S. gal**  
 Swing drive . . . . . 16.2 ltr **4.3 U.S. gal**  
 Hydraulic tank . . . . . 248 ltr **65.5 U.S. gal**



### OPERATING WEIGHT (APPROXIMATE)

Operating weight including 7060 mm **23'2"** one-piece boom, 3380 mm **11'1"** arm, SAE heaped 1.94 m<sup>3</sup> **2.54 yd<sup>3</sup>** bucket, rated capacity of lubricants, coolant, full fuel tank, operator, and standard equipment.

Shoes	PC400LC-7		PC400LC-7 Variable Gauge	
	Operating Weight	Ground Pressure	Operating Weight	Ground Pressure
700 mm 28"	43419 kg 95,720 lb	0.67 kgf/cm <sup>2</sup> 9.48 psi	44387 kg 97,856 lb	0.68 kgf/cm <sup>2</sup> 9.69 psi
800 mm 31.5"	43869 kg 96,712 lb	0.59 kgf/cm <sup>2</sup> 8.38 psi	44837 kg 98,848 lb	0.60 kgf/cm <sup>2</sup> 8.57 psi
900 mm 35.5"	44329 kg 97,726 lb	0.53 kgf/cm <sup>2</sup> 7.53 psi	45297 kg 99,862 lb	0.54 kgf/cm <sup>2</sup> 7.69 psi